

## CBG SOUTH

Potency Analysis Report

Sample: **70626H-P PLANTS**

Item Notes:

METRC No. **1A4000D00037D5D000000430**

Batch: DHG CBG C 9/3

### CANNABINOID LEVELS

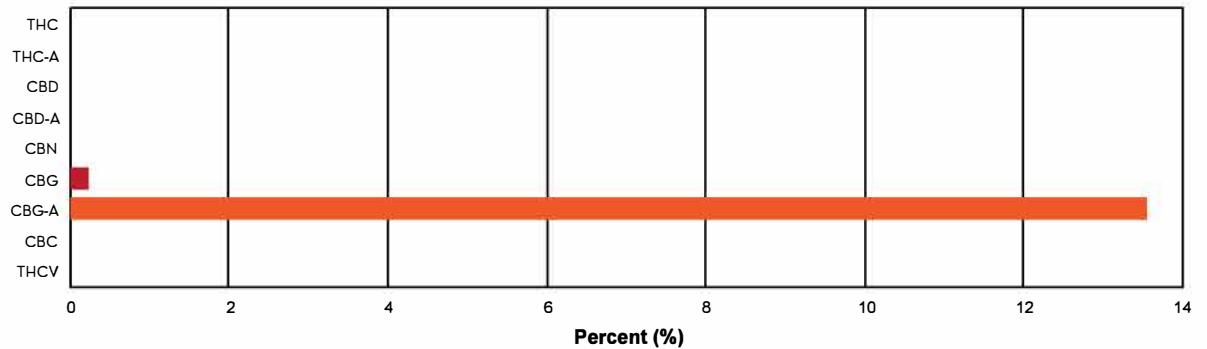
	%	mg/gram
THC	N/D	N/D
THC-A	< LLOQ	< LLOQ
CBD	N/D	N/D
CBD-A	N/D	N/D
CBN	N/D	N/D
CBG	0.23	2.35
CBG-A	13.55	135.47
CBC	< LLOQ	< LLOQ
THCV	N/D	N/D
<b>Total</b>	<b>13.78</b>	<b>137.82</b>

### TOTAL THC\*: < LLOQ

THC + THC-A\*: % by weight

### TOTAL CBD\*: N/D

CBD + CBD-A\*: % by weight



### ADDITIONAL INFORMATION

\*\*THC Conversion 0.00%

**\*\*Total THC** is calculated using the equation  $THC + (THC-A \cdot 0.877)$ . This accounts for the weight lost by THC-A when it is decarboxylated to become active THC. An equivalent formula is used to determine Total CBD.

**\*\*THC/CBD Conversion** indicates the percentage of total cannabinoid that was already converted to active cannabinoid at the time of testing. 100% indicates that all cannabinoid present was in the active, decarboxylated form at the time of testing.

**N/D** = Not Detected. The level of analyte was below the detection threshold for this test.

**LLOQ** = Lower Limit of Quantitation. <LLOQ signifies that the analyte was detected at a concentration below the calibrated range of the method and could not be accurately measured.

Authorized by: Roy Turton, Lab Director

Page 12 of 28

ISO/IEC 17025:2017

